

Fiddle Tunes no. 2

Bassoon

1. Flap-Oor-Ezel

Folk melodies

Musical notation for the first staff of 'Flap-Oor-Ezel'. It is in bass clef, key of D major (two sharps), and 2/4 time. The first measure starts with a dynamic marking of *f* (forte) and a crescendo hairpin. The second measure has a dynamic marking of *mf* (mezzo-forte). The melody consists of eighth and quarter notes with accents and slurs.

Musical notation for the second staff of 'Flap-Oor-Ezel', measures 10-16. Measure 10 starts with a dynamic marking of *mf*. Measures 11 and 15 contain double bar lines with a '2' above them, indicating a second ending. The notation includes eighth notes, quarter notes, and rests.

Musical notation for the third staff of 'Flap-Oor-Ezel', measures 17-22. Measure 17 starts with a dynamic marking of *mf*. The melody continues with eighth and quarter notes, including accents and slurs.

Musical notation for the fourth staff of 'Flap-Oor-Ezel', measures 23-26. The piece concludes with a key signature change to D minor (one sharp) and a 2/2 time signature. The notation includes quarter notes and rests.

Moderato ♩ = 120

2. De Hiel & Teen Polka

Musical notation for the first staff of 'De Hiel & Teen Polka', measures 27-32. It is in bass clef, key of D major (two sharps), and 2/2 time. The melody consists of quarter notes and rests.

Musical notation for the second staff of 'De Hiel & Teen Polka', measures 33-36. Measures 33-34 are marked with a first ending bracket and '1.'. Measures 35-36 are marked with a second ending bracket and '2.'. The notation includes quarter notes and rests.

Musical notation for the third staff of 'De Hiel & Teen Polka', measures 37-40. The melody continues with quarter notes and rests, including accents and slurs.

Musical notation for the fourth staff of 'De Hiel & Teen Polka', measures 41-44. The piece concludes with quarter notes and rests.

Bassoon
3. Kippen dans

2

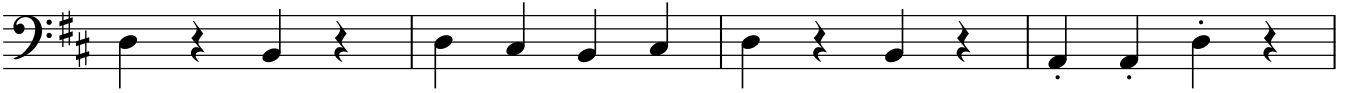
45 Allegro ♩ = 140



50



54



58



62



66

